



# Addressing fraud risks in locally administered services

Zoe Kent

Vice-Chair of the Kent Intelligence Network

# The Kent Intelligence Network



# Positioning within Kent



Kent Tenancy  
Fraud Forum



Kent Finance  
Officer Group  
(S151 Officers)



Kent Intelligence  
Network



Kent Revenues &  
Benefits Managers  
Group

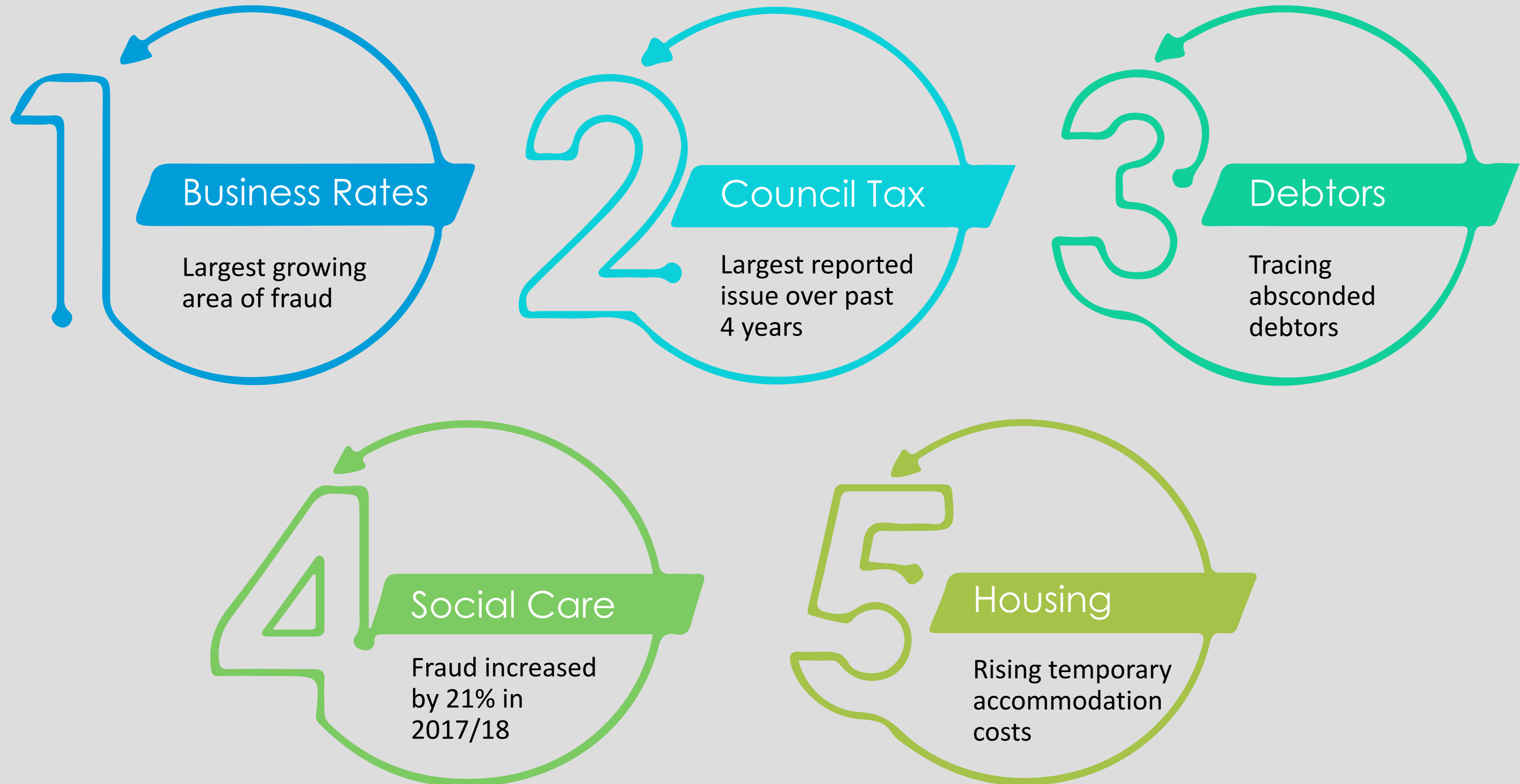


Kent  
Investigation  
Officer Group

An aerial photograph of a city with several multi-story buildings and a street. A large, semi-transparent blue circle is centered over the image, containing the text 'Fraud Risks'. The circle has a white border and is set against a background of a cityscape under a cloudy sky.

# Fraud Risks

# Risks that correlate with a reduction in budgets



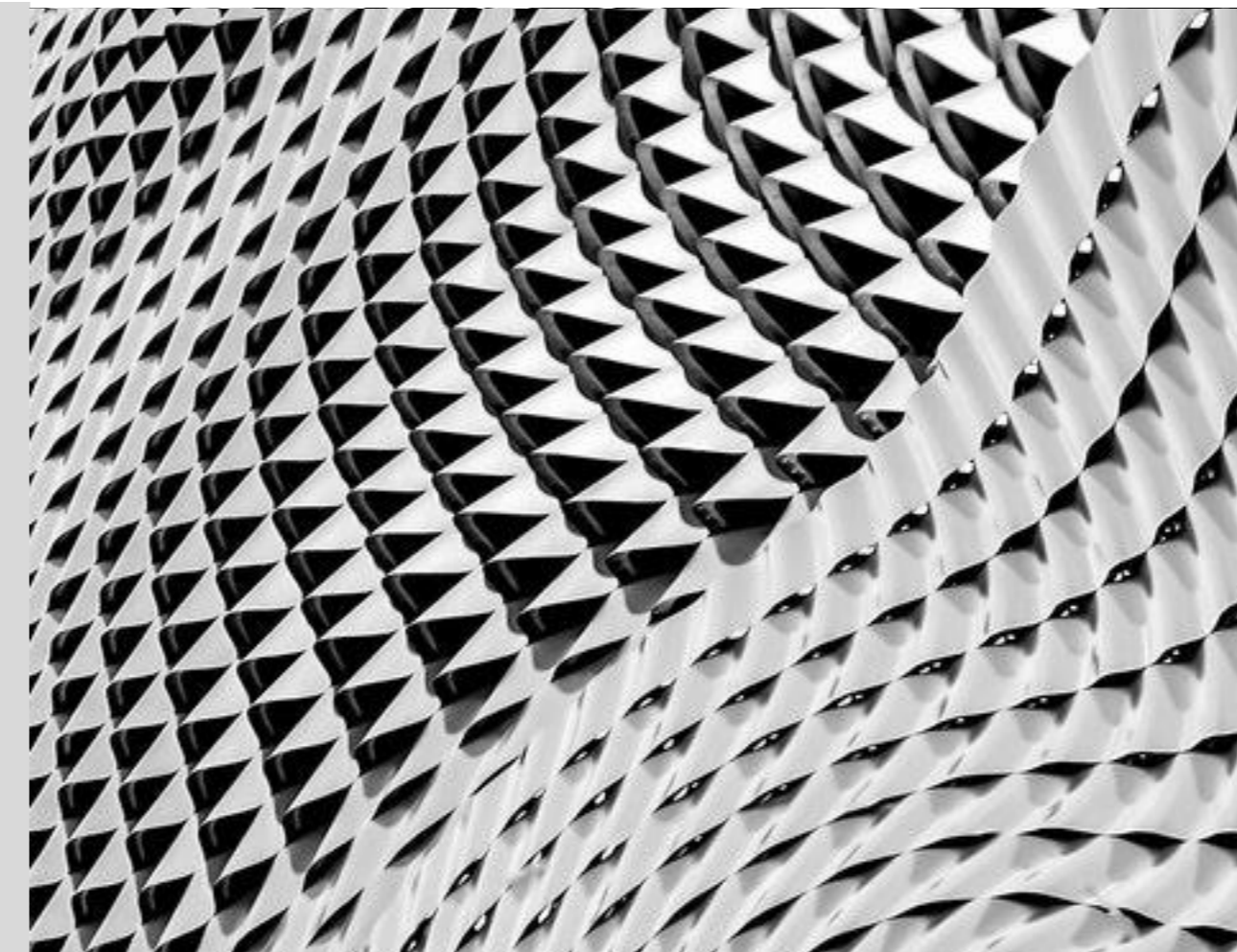
An aerial photograph of a city with several multi-story buildings and a street. A large, semi-transparent blue circle is centered over the image. Inside this circle, the text "Addressing the Risks" is written in white, sans-serif font. The background image is slightly faded and has a greenish tint.

# Addressing the Risks

# Supporting Member Authorities



Good quality  
referrals



Communication &  
Engagement



Leading &  
coordinating activities



Embracing  
technology & open  
data sources



# Mitigating risks



## HUB

- Identification of falsely claimed Small Business Rate Relief
- Rates Avoidance Register
- Finding Ratepayers
- Company name changes



## Missing hereditaments

- Google Earth
- Google Maps
- Google Street View
- Open data sources
- Sales/Letting information
- Planning data



## Absconded debtors

- Online tracing tool
- Single search entry box (same principle as a well-known search engine)
- Doesn't leave a credit search footprint



An aerial photograph of a city with several large, multi-story buildings. A large, semi-transparent blue circle is centered over the image. Inside this circle, the word "Outcomes" is written in a white, sans-serif font. The background image is slightly faded and has a greenish tint, especially around the edges of the blue circle.

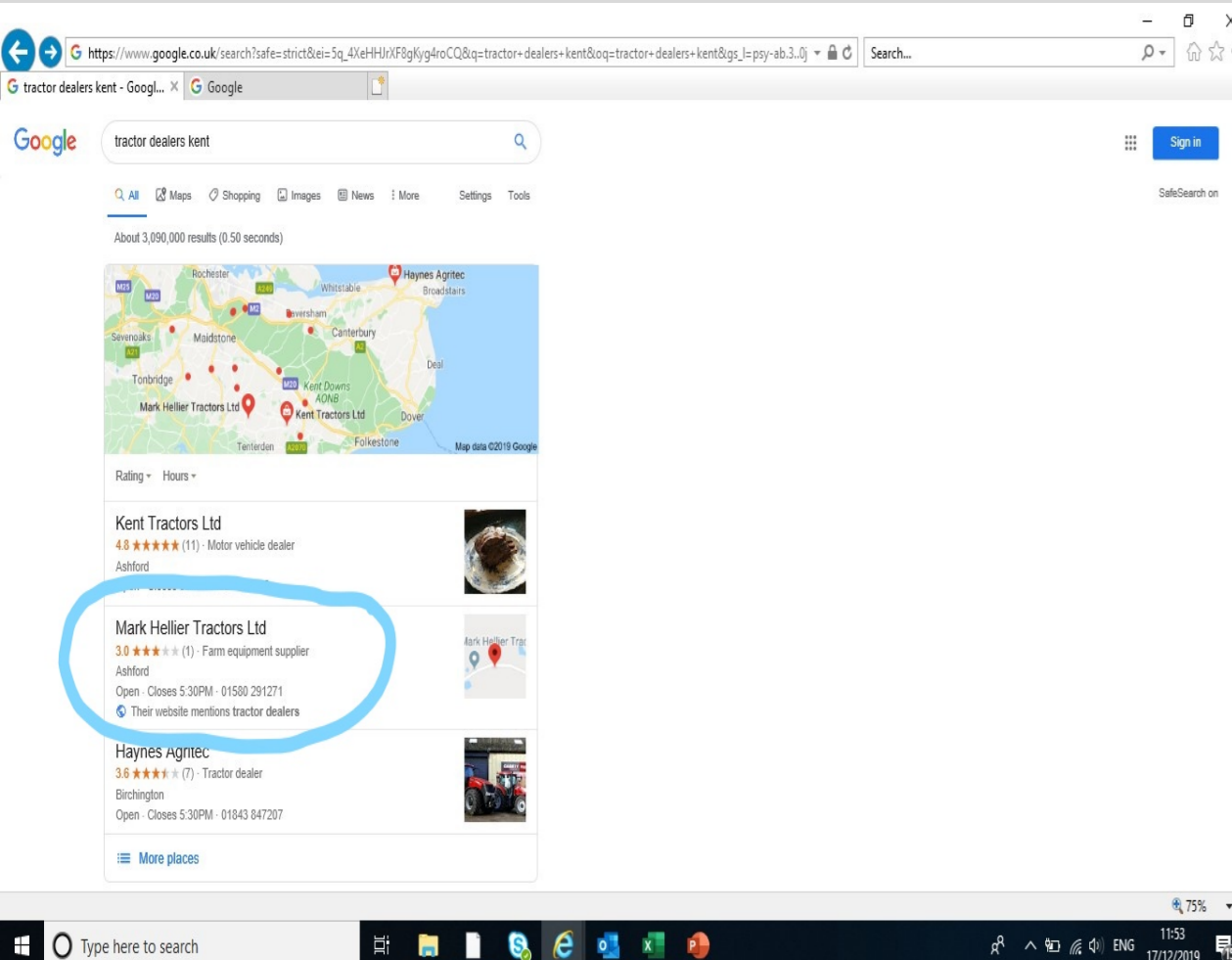
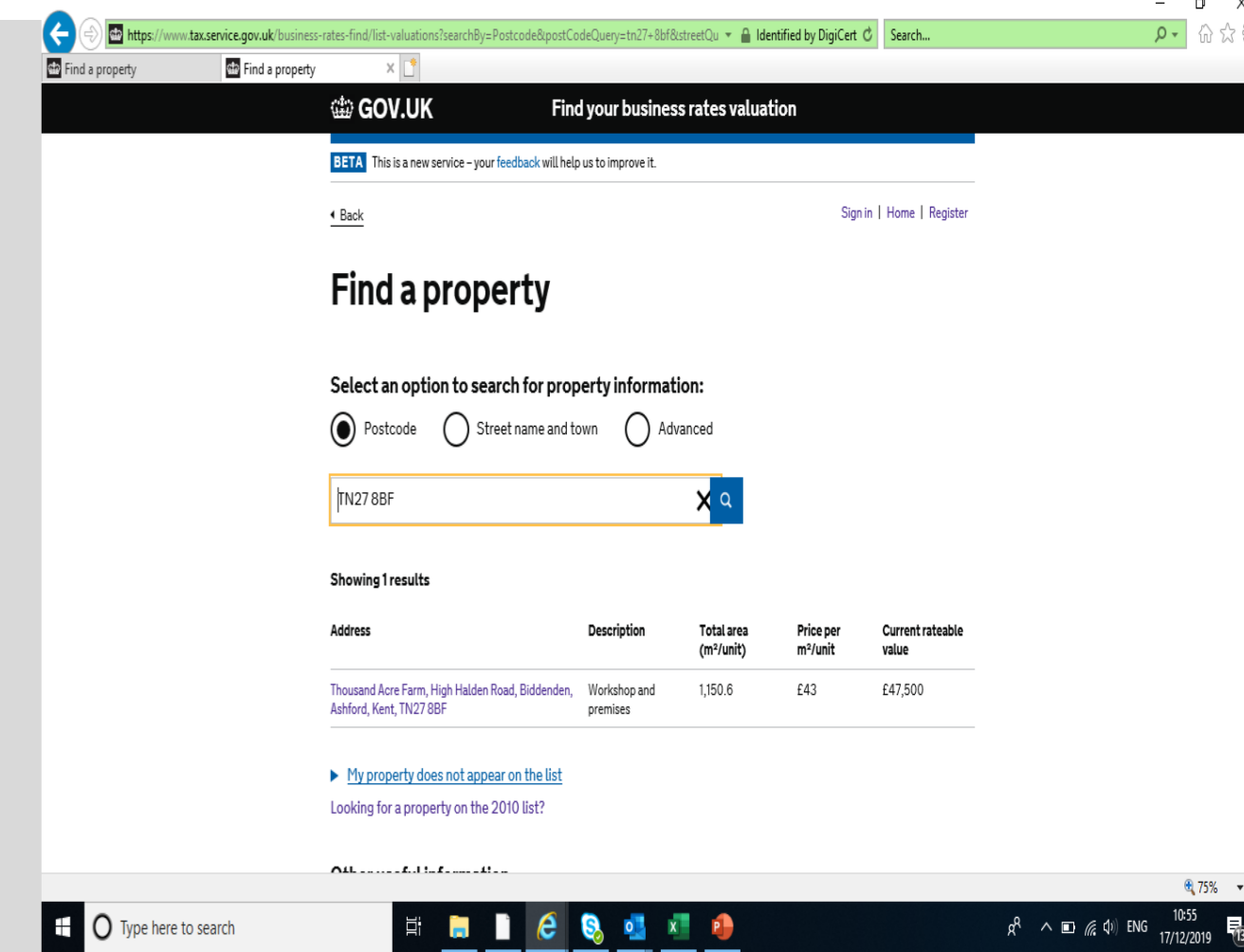
# Outcomes

# Case Study 1 – Mark Hellier Tractors

- Think agricultural
- Search 'Tractor Dealers in Kent'
- MHT in Top 3 return



Refer for investigation



- View in Google Earth
- Check local authority list
- Check rating list



- RV £47,500
- 1<sup>st</sup> April 2017
- Total billed - £68,258
- Future loss - £69,968

# Case Study 2 – Kentdown Mushroom Farm

- Think farm diversification
- Pick a rural area and scan it using Google Earth/Street View
- Identify potential targets
- Check local authority list
- Check rating list



- Mushroom Farm exempt (classified as agricultural)
- Visit uncovered 20 business units + storage container
- Additional RV £122,200
- Total billed - £154,307
- Future loss - £180,001

Number of new  
business rate  
assessments  
brought into the  
rating list.

**113**



Additional  
Rateable Value  
added to the  
rating list.

**£1,341,303**



Additional  
revenue  
generated from  
the new  
assessments.

**£3,587,182**



RV Finder  
service  
commission fee  
saving

**£131,931**



**KENT  
INTELLIGENCE  
NETWORK**

**£362,736**

Savings from  
renegotiated  
software  
contracts.



**£518,673**

Amount of debt  
traced and  
brought back  
into recovery.



**£2,923,200**

Amount of  
additional New  
Homes Bonus  
generated.



**£555,796**

Value of Small  
Business Rate  
Relief withdrawn  
due to fraud and  
error.



# Recognition



**Solutions Partner**



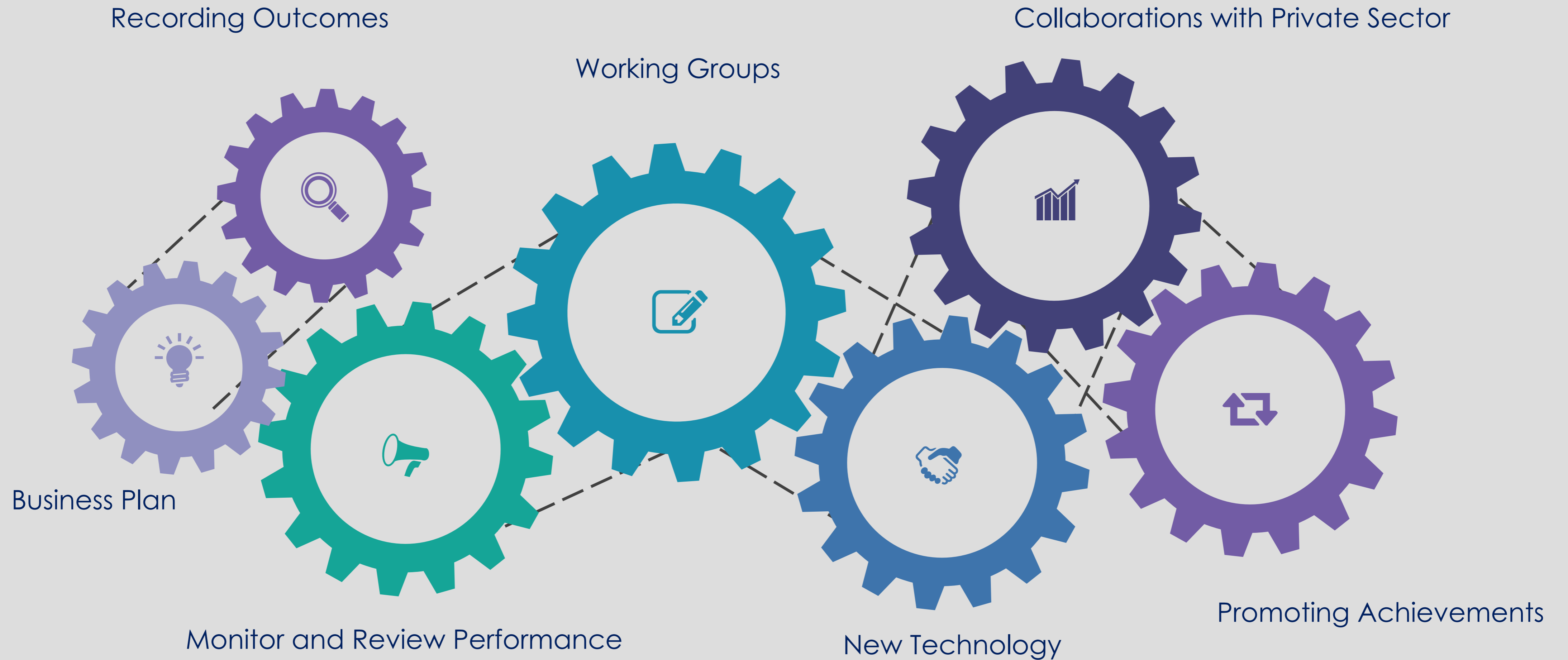
**Best Initiative in Combatting Fraud Award**



**Outstanding Proactive Fraud Detection and Recovery**



# Maintaining Success



An aerial photograph of a city with several large, multi-story buildings. A large, semi-transparent blue circle is overlaid in the center of the image. Inside this circle, the text "Any questions?" is written in a white, sans-serif font. The background image is slightly faded and has a greenish tint.

Any questions?